



**OTTO**

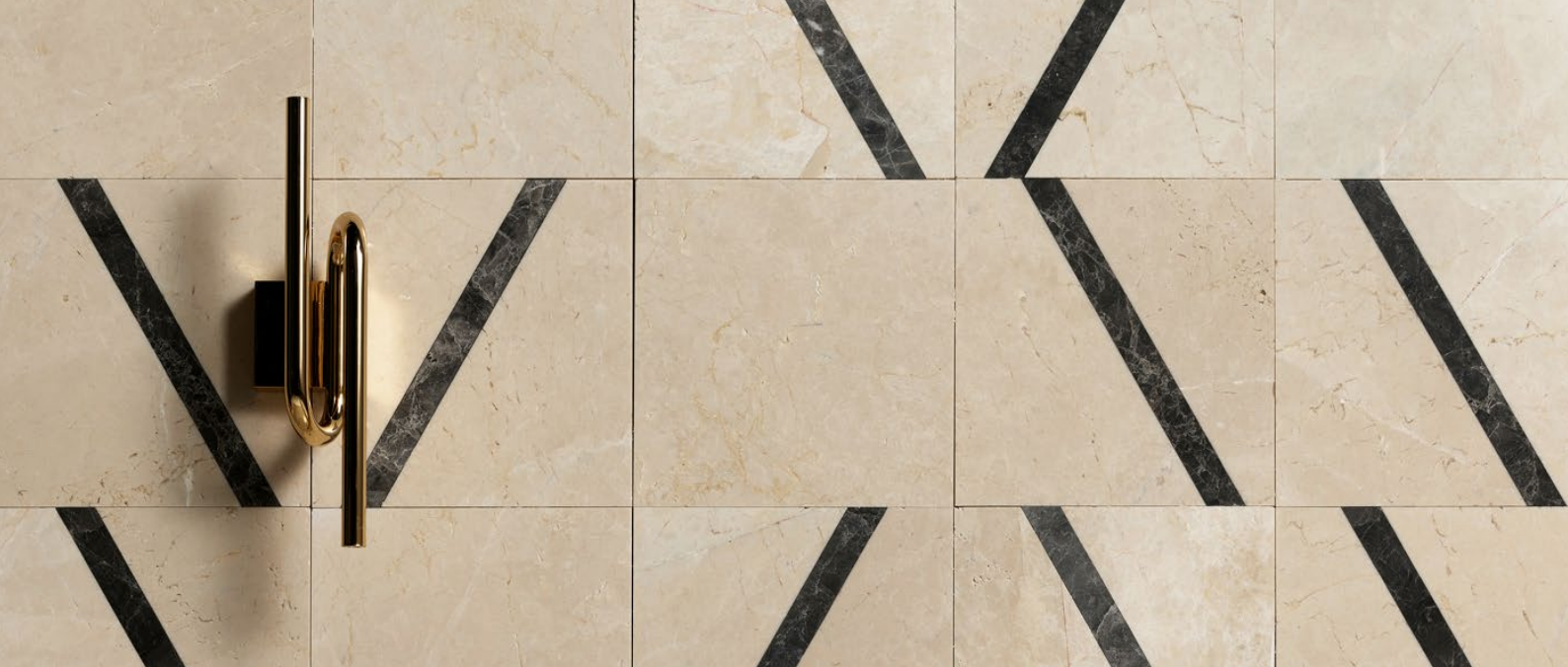
— TILES & DESIGN —

# Marble Tile

INSTALLATION  
AND  
MAINTENANCE  
GUIDE

[ottotiles.co.uk](http://ottotiles.co.uk) • [ottotiles.com](http://ottotiles.com)





## Welcome to Otto Tiles & Design

Otto Tiles & Design is a contemporary tile company with a rustic touch and the provider of unparalleled quality artisan tiles.

## Our Mission

At Otto Tiles, we design and create handcrafted tiles that blend heritage, artistry, and modern aesthetics. Our mission is to bring meaningful beauty into homes and spaces around the world —one tile at a time— while honoring the artisans behind each piece and inspiring connection through design.

## Our Vision

With Turkish roots, Otto Tiles aims to become the world's most soulful design brand bridging the East and West. Reviving timeless craftsmanship, celebrating cultural heritage, and transforming everyday spaces into living works of art.



Otto Marble Tiles are suitable for,

- Walls and floors
- Indoor and outdoor
- Kitchen and Bathroom Backsplash
- High-traffic commercial areas
- Use with underfloor heating
- Showers and wet areas

## How Do We Produce Marble Tiles?

Marble is quarried from natural deposits in the earth. Large blocks of marble are carefully extracted using heavy machinery.

The extracted marble blocks are then cut into smaller, manageable pieces using diamond tipped saws. These pieces are typically rectangular in shape and referred to as "slabs." The slabs undergo a series of finishing processes, including polishing, honing, or brushing.

After the slabs are finished, they are cut into individual tiles using specialized equipment. These tiles can vary in size and thickness to meet specific project requirements. Each tile is carefully inspected for imperfections, such as cracks or blemishes. Only tiles that meet strict quality standards are selected for packaging and sale.





## Welcoming Your Otto Tiles

- Marble is a natural stone with unique veining, shades, and patterns. Blending tiles from different boxes helps create a more balanced and aesthetically pleasing appearance by spreading these variations evenly throughout the installation.
- Take the products out of their boxes and lay them out with the patterned part facing up. Do not stack tiles on top of each other.
- Dust, wet, and shipping residue might be expected and should be dried/cleaned before installation.
- We suggest adding at least %15 overage to your order due to tile cuts for covering edges/corners. Potential breakage occurs during the transportation and installation. Particularly if you have a strict deadline and your project schedule wouldn't tolerate extra production and shipment duration.
- Reducing carbon footprint and sustainability is crucially essential for us. Your products are delivered to you in recyclable cardboard boxes. We do not use a sheet of paper or Polystyrene Foam Brick between the tiles that are generally still moist from production during shipping.
- Large orders are delivered on pallets as kerbside. When you receive the products, you may not take them out of the pallet immediately. Please protect your products by considering the weather conditions.







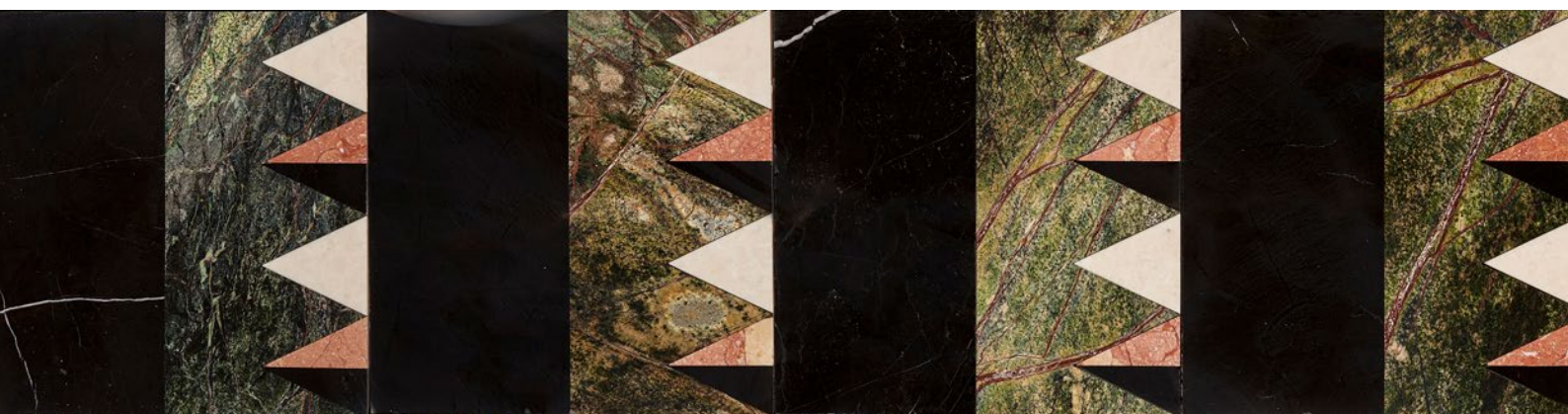
## Installation Tips

### Preparation

- Although DIY has become a popular trend in recent years, perfect tiling still requires a bit of mastery and experience. If you have no experience in tiling, we highly recommend an experienced and professional tiler.
- The surface must be level, dry, clean, and free from dust and oil.
- If installation problems occur from substrate or construction engineering and/or installation issues, please refer to your project architect, structural engineer, and/or a tiler for the best results for your tile finish.

As a standard rule, installation means acceptance. Do not install if there is a visible issue on the tile, and please get in touch with us before installation. Otto Tiles does not cover misuse by the tiler/builder/contractor or end-user, including but not limited to negligence and physical and/or chemical abuse.

- To ensure proper bonding during installation, we recommend lightly wiping the back of each tile if there is excessive dust.







## Installation

- The tile installer must allow space for grouting when setting the tiles. We recommend 1mm for the best aesthetic results.
- A flexible, strong adhesive is recommended for areas subject to sudden changes in temperature. Waterproofing materials must be used for wet areas. It would be more accurate for your architect or tiler to advise how much adhesive you need to use according to the project surface, square meter, and leveling.
- If applicable, floor heating systems must be turned off at least 12 hours before the tile setting. Leave a minimum 3 mm grout space if you install tiles on underfloor heated floors.

Please seal tiles before and after grouting. It is highly recommended for dark-coloured grouts.

- Rubber hammers or similar tools must not be used for setting the tiles as they may cause hairline cracks.
- Marble tiles can be installed on backsplashes in bathrooms and showers. A waterproof membrane is needed to use under the tile.

Otto Tiles is a tile supplier; what is written in this guide is for advice. Otto Tiles does not cover misuse by contractor, tiler, and end-user, including but not limited to negligence, physical and/or chemical abuse.





## Sealant

- Due to the porous nature of marble tiles, all tiles MUST be sealed before and after grouting.
- Otto Tiles only recommends Lithofin MN Stain Stop. Sealant is a transparent liquid and will never change the colour, finish and texture of your tile.
- Lithofin MN Stain Stop estimated coverage is 3 to 6 m<sup>2</sup>/L. Please make sure to follow the Lithofin [application instructions](#).
- Make sure the sealant is dry, and always test on a small area to make sure the tiles are not stained.
- The surface to be treated must be absorbent, clean, and completely dry. Suitable application tools: cloth, brush, or sponge.
- If your contractor/tiler has any issues or questions regarding this sealant, please have them reach out to Lithofin directly.

**Tip:** If water does not bead up on the surface of the tiles, then the sealant is not applied correctly.







## Grouting

- Otto Tiles only recommends Mapei Ultracolor Plus grout for marble tile installation. Please make sure to follow the Mapei [application instructions](#) to avoid the risk of staining/grout haze.
- Recommended grout gap size is 1 mm. They are suitable for underfloor heating, but remember to leave a minimum 3 mm grout gap.
- Grouting should be applied after an interval, typically one day. The waiting time depends on the surface, environmental conditions, and the type of adhesive used.
- Always test the grout on a small area to ensure the tiles are not stained.
- Grout small areas of between 2 sqm to 4 sqm at a time so that cleaning can begin before the grout skins over and dries on the tile surface.
- Once the setting and grouting are complete, allow an extra drying period before use to avoid movement and cracks.
- Excess grout must be cleaned immediately with clean water and a clean, damp cloth/sponge.
- Change your water bucket frequently to prevent the occurrence of a haze on the tile surface.
- Use a “clean as you go” approach to spreading and washing the grout to ensure that cleaning begins before the grout skins over and dries on the tile surface. Do not allow the grout to harden on the surface.
- If the grout hardens, you can clean it with non-acidic chemicals, but you must rinse immediately with a sponge and water.
- Grout color selection is always up to our client and/or their architect. However, Otto Tiles is often asked for our opinion on the best grout selections for our tiles. We are pleased to give you grout color options for your tile.
- Grout staining is only a problem if the guidelines set for Lithofin MN Stain Stop and Mapei Ultracolor Plus aren't followed properly.

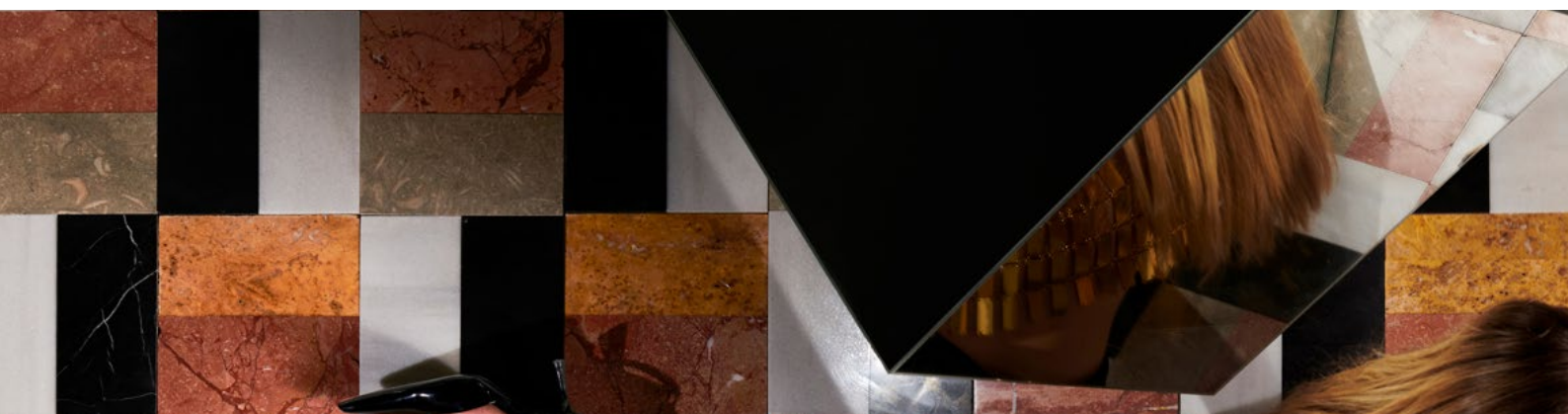




- Please follow the Mapei Ultracolour Plus application and cleanup instructions to avoid the risk of staining/grout haze and allow for easy application and cleanability.
- Read all installation instructions thoroughly before use.
- If your contractor/tiler selects brands other than Mapei grout or Lithofin sealant, please have them reach out to their representatives of those manufacturers for advice and support on failures.

## **Aftercare**

- Over time, a natural patina will occur on your tiles due to their nature, and they will develop a rustic aged look. Some staining is part of this, and it's totally normal.
- Sealing annually is sufficient for high-traffic areas.
- Single coat reapplication of the penetrating sealant is required once a year in shower applications due to continuous exposure to water.
- Sealant durability is up to 5 years on outdoor surfaces. Indoor durability depends on the care products used.
- Check with the Lithofin Sealant tech support directly at 01962732126 for the best advice on applying and maintaining sealants.

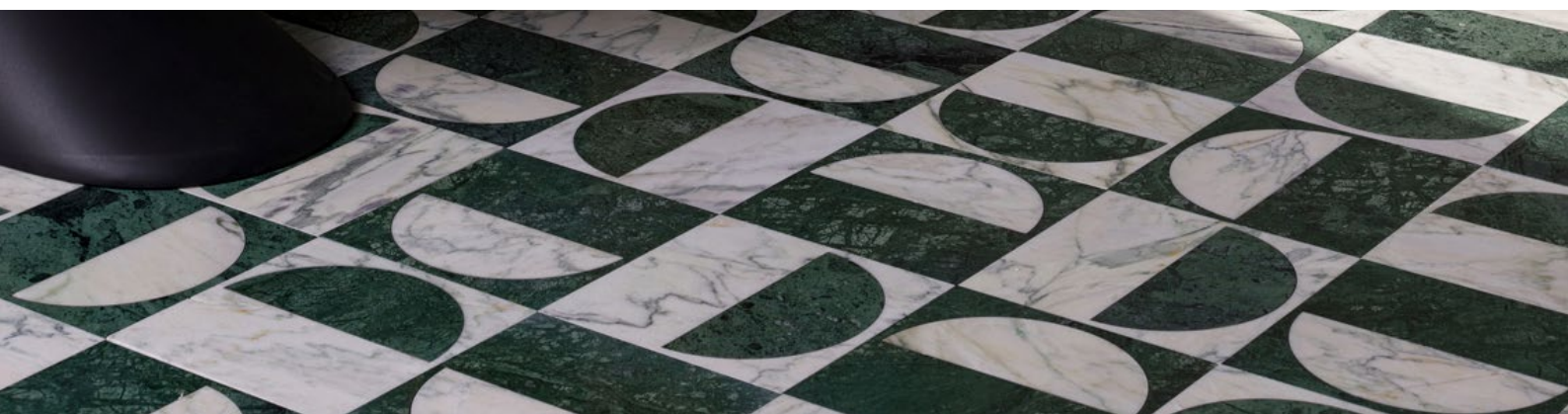




## Cleaning

- Immediately clean up spills, and do not allow liquids to sit on the tile surface. Excess fluid can stain, pit, and crack the tile.
- Sweep regularly; abrasive dirt and materials can scratch the surface.
- Don't use vacuum cleaners that are worn. The metal or plastic attachments or the wheels may scratch the stone's surface.
- Non-slip mats or area rugs should be placed inside and outside entrance ways to remove corrosive materials that can scratch and dirty the tile surface.
- Mop floors regularly with clean water and pH-neutral cleaner.
- Shower wall and floor installations should be squeegeed after each use to prevent limescale stains, soap scum, and mold.
- Always avoid harsh chemicals, acidic products, oil, and hair dye products. These stains are difficult to remove from marble, and they will require the use of a professional cleaning service.

Please be advised that avoiding walking on the marble floor is crucial until it is completely dry. Wet marble floors may become slippery and pose a potential safety hazard.





## London

- ☎ +44 2034 889317
- ✉ [info@ottotiles.co.uk](mailto:info@ottotiles.co.uk)
- 📍 2 Ash Grove, London, E8 4RH

## Miami

- ☎ +1 (786) 460 9098
- ✉ [info@ottotiles.com](mailto:info@ottotiles.com)
- 📍 7612 NE 4th Ct, Miami, FL 33138

## Istanbul

- ☎ +90 (212) 526 00 52
- ✉ [istanbul@ottotiles.com.tr](mailto:istanbul@ottotiles.com.tr)
- 📍 Firuzaga Mah. Cukurcuma Cad.  
No:27A Beyoglu - Istanbul / Turkey

[ottotiles.co.uk](http://ottotiles.co.uk) • [ottotiles.com](http://ottotiles.com)